



SCAN TO WATCH  
UNO VIDEO



SCAN TO WATCH  
DUO VIDEO

# Foldable Motorcycle & Bicycle Trailer Catalogue

LNB Towbars & Vehicle Extras Ltd.  
Telephone 0117 9694955

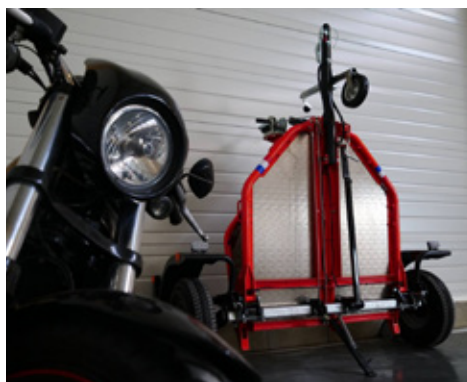
### UNO Folding Motorbike Trailer with lowering flatbed

This fantastic trailer is the ideal accessory for transporting a single motorcycle or bicycle and can be easily and safely loaded and unloaded single-handedly.

The trailer can be folded and stored vertically saving a huge amount of space over traditional trailers.

#### Product Features:

- Motorbike holder for the front wheel
- Lowering flatbed to load and unload your bike easily and safely
- Can be folded and stored vertically in a garage
- Can be folded and unfolded in less than a minute without any tools
- Once folded, can be easily moved and stored in a limited space
- High quality trailer with a welded and powder-coated chassis
- Certified and approved to European standards, a guarantee to be able to legally take your motorbike anywhere in Europe and get insurance
- European Certificate of Conformity



#### Technical Details:

- Empty weight: 160kgs
- Payload: 431kg
- Wheels: 155/70R13
- Structure: Steel chassis welded and hot-dip galvanised
- Motorcycle wheelbase up to 1,700mm

#### Dimensions:

- Length: 3,095mm
- Width: 1,850mm
- Effective length: 2,472mm
- Effective width: 1,100mm
- Storage size:  
H 1,590mm / L 1,890mm / W 830mm





**DUO Folding Motorbike Trailer with lowering flatbed**

This fantastic trailer is the ideal accessory for transporting up to 2 motorcycles or bicycles and can be easily and safely loaded and unloaded single-handedly.

The trailer can be folded and stored vertically saving a huge amount of space over traditional trailers.

**Product Features:**

- Lowering flatbed to load and unload your bikes easily and safely
- Can be folded and stored vertically in a garage
- Can be folded and unfolded in less than a minute without any tools
- Once folded, can be easily moved and stored in a limited space
- High quality trailer with a welded and powder-coated chassis
- Certified and approved to European standards, a guarantee to be able to legally take your motorbike anywhere in Europe and get insurance
- European Certificate of Conformity

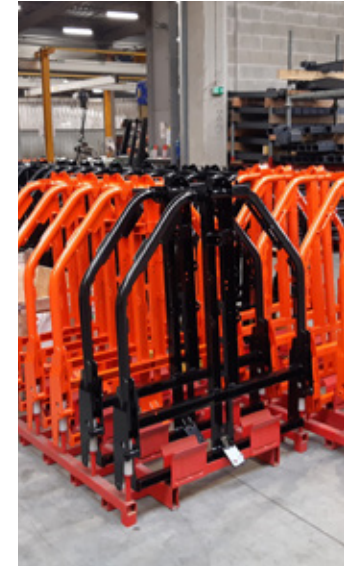


**Technical Details:**

- Empty weight: 244kgs
- Payload: 506kg
- Wheels: 165/70R14
- Structure: Steel chassis welded and hot-dip galvanised
- Motorcycle wheelbase up to 1,700mm

**Dimensions:**

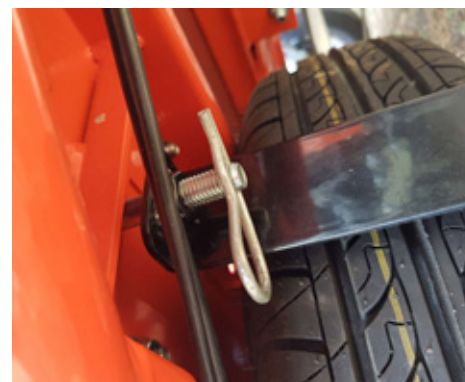
- Length: 3,280mm
- Width: 2,280mm
- Effective length: 2,580mm
- Effective width: 1,370mm
- Storage size:  
H 1,660mm / L 2,280mm / W 1,285mm



**TWO BICYCLES KIT**  
**OPTIONAL SPARE WHEEL**  
**HOLDER BRACKET**  
**MP3 STAND**  
**WHEEL STRAPS**

**Benefits:**

- Designed to support all bike models. Even electric bikes
- Can be carried without difficulty.
- A very rigid concept to prevent bicycles from moving to transport
- Articulated mounting arm for frame to fit all bike models
- Universal tie-down strap system for all types of bike: one for each rim and another for the frame
- Find the perfect position for your bikes thanks to adjustable wheel attachments
- Compatible with the ratchet strapping of the motorcycle
- Nothing to remove when you want to fold the UNO trailer



Ask us about our other product ranges.



Local Dealer:

LNB Towbars & Vehicle Extras Ltd.  
Telephone 0117 9694955

[www.LNBTowbars.co.uk](http://www.LNBTowbars.co.uk)